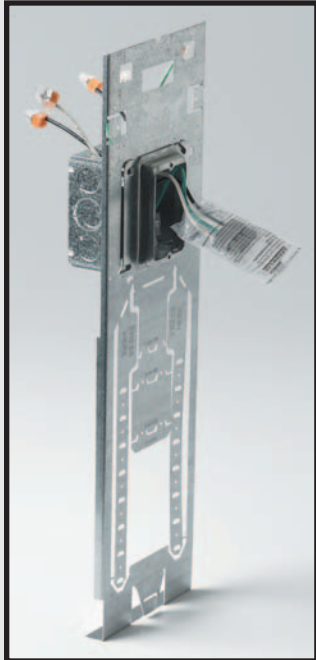


ArrowLink™ Modular Wiring Devices with Ruff-IN Pre-Fab Assemblies

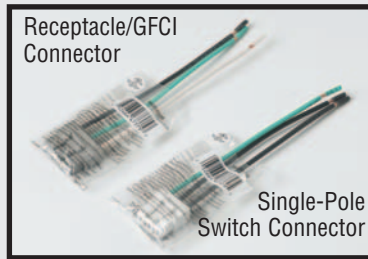


The ArrowLink™ Connector end is now available as an accessory in the Ruff-IN Pre-Fab Systems offering.



BBF18-1104DA-PMCR

- Assemblies will be pre-wired to allow for quick cable installation.
 - ◊ Step 3, on back, details available wiring configuration options.
- Assemblies include a cover plate attached to the mud ring for additional protection.
- The ArrowLink Modular devices are sold separately. See your local Cooper Wiring Device representative for details.



Receptacle/GFCI Connector

Single-Pole Switch Connector

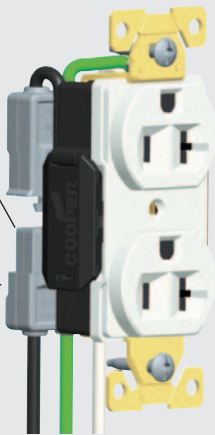
Plastic bag cover shields contacts from paint and drywall mud



Receptacle

Plug and connector design provides first-make/last break grounding connection

One-piece impact-resistant connector for maximum durability during rough-in



Clearly marked, consistent pre-wired configurations eliminate mis-wiring of devices

First pre-wired modular switch in the industry, available in both toggle and decorator styles for 120V or 277V

ArrowLink allows easy change-out for device maintenance

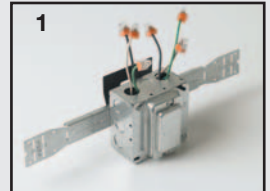


Switch

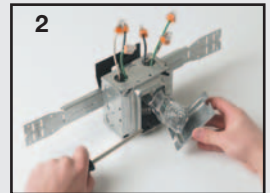


ArrowLink wiring devices can easily be converted for standard installation

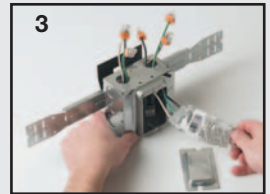
Typical Installation Steps



1 Attach bracket to stud.



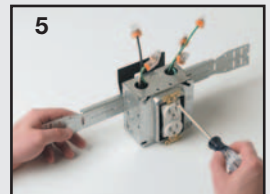
2 Remove cover plate.



3 Remove ArrowLink plastic bag.



4 Plug in ArrowLink plug with device.



5 Screw device into plaster ring.

Phone: 800-851-7415 • www.cooperbline.com

Advantage Flyer • Fasteners

† Example shown below

BB76 - 1 10 4D A - - - - - P MCR



Step 1 - Basic Ruff-In

1 Common Bracket Options

- BBF18 = 18" Floor Stand
- BBF18C = 18" Floor Stand w/ Cable Containment
- BBF216TS = 16" Telescoping Slider Bracket
- BBF216TCL = 16" Telescoping Bracket w/Croc Lock
- BB76 = Double-Sided Box Support for 6", 5 1/2", 3 1/2", or 2 1/2" stud depths
- BB46 = Single-Sided Box Support for 6", 5 1/2", 3 1/2", or 2 1/2" stud depths

Note: All Ruff-IN bracket options that include the ArrowLink plug option are explained in the Ruff-IN Catalog (BLFRI-09)

2 Plaster Ring Style

- 1 = One Device
- 2 = Two Device
- R = Round
- 1AJ = One Device Adjustable *
- 2AJ = Two Device Adjustable *
- Blank = Box Only

3 Plaster Ring Size

- 04 = 1/4" Raise
- 08 = 1/2" Raise
- 10 = 5/8" Raise
- 12 = 3/4" Raise
- 16 = 1" Raise
- 20 = 1 1/4" Raise
- 24 = 1 1/2" Raise
- 32 = 2" Raise
- Blank = Box Only or Adjustable Plaster Ring

* One device adjustable plaster rings are set at 3/4" raise and can be adjusted to 1 1/2" raise. Two device adjustable plaster rings are set at 5/8" raise and can be adjusted to 1 1/2" raise. Adjustable plaster ring can only be used on 4" square boxes.

Step 1 - Basic Ruff-In (cont.)

4 Box Style

- 4D = 4" Sq., 2 1/8" Deep
- 436 = 4" Sq., 2 1/8" Deep, 1" KO
- 4 = 4" Sq., 1 1/2" Deep
- 432 = 4" Sq., 2 1/8" Deep, 3/4" KO
- 5D = 4 11/16" Sq., 2 1/8" Deep
- 560 = 4 11/16" Sq., 2 1/8" Deep, 1" KO
- 5 = 4 11/16" Sq., 1 1/2" Deep
- 554 = 4 11/16" Sq., 2 1/8" Deep, 3/4" KO

5 Ground Wire

(Pre-installed devices require stranded wire)

- Blank = Solid Ground Wire
- A = Stranded Ground Wire
- N = No Ground Wire

6 Firestop Pad

- Blank = No Pad
- F = Pad Installed

Step 2 - Connectors

7 Connector Top Left KO

- Blank = No Attachment
- L = Attachment Present

8 Connector Type

- Blank = None
- A = QLK50S (1/2" single MC)
- B = QLK50D (1/2" double MC)
- C = QLK75 (3/4" single MC)
- D = SSBC50 (1/2" EMT Connector)
- E = SSBC75 (3/4" EMT Connector)
- F = SSBC100 (1" EMT Connector)

9 Connector Top Middle KO

- Blank = No Attachment
- M = Attachment Present

10 Connector Top Right KO

- Blank = No Attachment
- R = Attachment Present

Step 3 - Wiring Devices

11 Wire Configuration

- P = Pigtails w/4 Hole Wago
- M = Pigtails w/ Bare Wire Ends extending from top KOs, Twist-On Wire Connectors Inside Box
- U = No Pigtails Wires Contained Inside Box w/6 Hole Wago
- V = No Pigtails, Bare-Wire Ends Contained Inside Box

Note: P and M configurations not available if KO connectors are installed on the outlet box

12

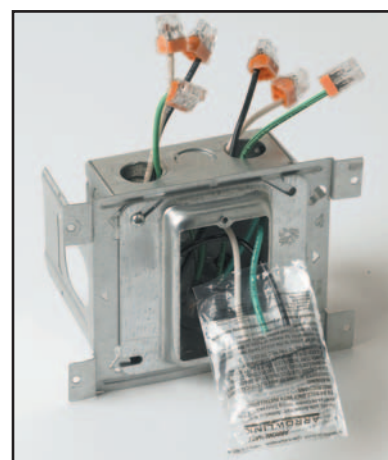
Device Type or ArrowLink Connector Options

For Device Type

Refer to Ruff-IN catalog (BLFRI-09)

ArrowLink Connector Options

MCR = ArrowLink Connector, Receptacle/GFCI
MCS = ArrowLink Connector, Single-Pole Switch



† **BB76-1104DA-PMCR**
(cover plate not shown)

- Basic Ruff-IN = 3-5 day lead-time for quantities of 1000 or less.
- Ruff-IN with Wiring Devices = 10-15 day lead-time for quantities of 500 or less.
- Non Stock Components = Call factory for lead-time.