



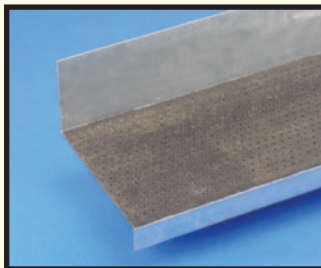
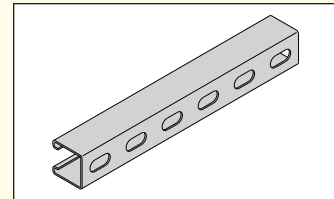
Traction Tread™ Stairs with Kickplate included



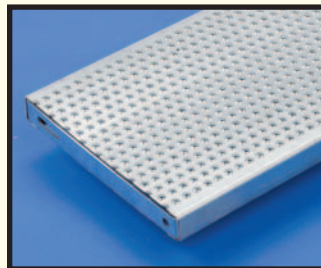
Features

- Pedestrian friendly slip resistant surface
- Variety of dimensions available upon request
- Ideal replacement over worn or slippery stairs

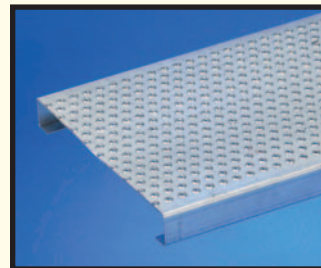
*Versatile B24SH
carrier plate
design*



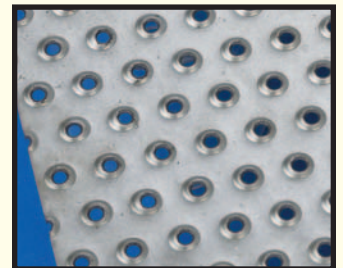
*Epoxy Grip™ Tread
with Kickplate*



*Standard Traction Tread™
Step*



*Traction Tread™ Plank
for field fabrication*



*Traction Tread™ Sheet
for resurfacing*

Available Configurations			
Product	Channel Heights	Gauge & Material	Widths
Sheet	N/A	11 Ga., 12 Ga., 13 Ga., 14 Ga. & 16 Ga. HRP&O Steel 0.125 Aluminum 5052-H32	36"
Planks & Treads	2", 1 1/2" (Minimum)	11 Ga., or 13 Ga. Pre-Galvanized Steel 0.125 Aluminum 5052-H32	7", 10", 12"

Sheet Length - 10' (120")

Plank Lengths - 10' & 12'

Special fabrication, cutting or specialty configurations available upon request.

Stainless available upon request.

Chart Data for 11 gauge steel
2" deep - 12" wide - 7.30 lbs./lin. ft.

Span	UL	Defl.	CL	Defl.
24"	1782	0.035	1782	0.023
36"	792	0.079	1188	0.051
48"	445	0.113	891	0.090
60"	285	0.177	713	0.141
72"	198	0.254	594	0.203
84"	145	0.346	509	0.277
96"	111	0.452	445	0.362
108"	88	0.572	396	0.458
120"	71	0.706	356	0.565

UL = Uniform Load (in.)

CL = Concentrated Load (lbs.)

Defl = Deflection (in.)

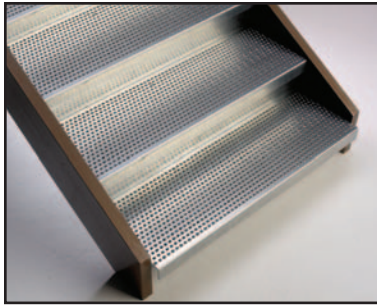
Phone: 800-851-9341 • www.cooperblines.com

Advantage Flyer • Specialty Grating

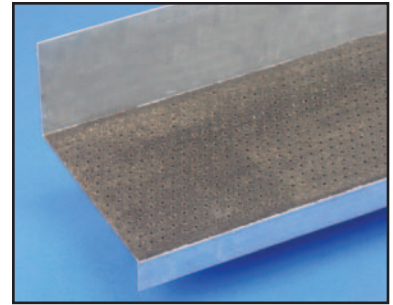
COOPER B-Line

www.cooperindustries.com

BA186SG



***Traction Tread™
Stairs
with kickplate included***



Pedestrian friendly slip resistant surfaces


COOPER B-Line

COOPER B-Line
509 West Monroe Street
Highland, Illinois 62249-0326